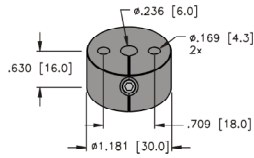


Rotary Inductive Sensors – Accessories, QR14

Positioning Element

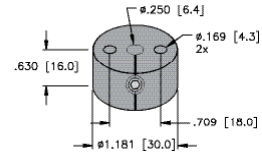
P1-Ri-QR14



Positioning element, operating at a distance of 0-6 mm to the sensor surface

Positioning Element

P2-Ri-QR14



Positioning element, operating at a distance of 0-6 mm to the sensor surface

Spacer Sleeve

DS-Ri-QR14



Spacer sleeve for overhead mounting